

Old Squattlesea Mere

Old Squattlesea Mere

Anne & John Ardlie
6 Albert Road
Port Fairy 3284

tel: 5568 2433
int: 61 3 5568 2433

[Email Old Squattlesea Mere](mailto:info@old-squattlesea.com.au)

[OSM Booking Form](#)

[Location](#)

[PDF for print](#)

Old Squattlesea Mere (OSM) is a 1850 to 1890 mid Victorian weatherboard timber homestead featuring modern renovations with period antique furnishings. Located at 6 Albert Road, Port Fairy, the Homestead offers quality guest accommodation.

Featuring:

- guest suite of 2 bedrooms, queen with ensuite
- guest's own entrance and living area
- tea & coffee making facilities
- guest verandah & garden areas
- TV, VCR and CD player
- all linen provided
- adjacent tea rooms offer breakfast & lunches daily
- off-street guest car park
- 10 minute walk to town centre

OSM Tariffs

from:

\$150 - \$200 per night double
\$250 suite per night

OSM Booking/Cancellation Policy:

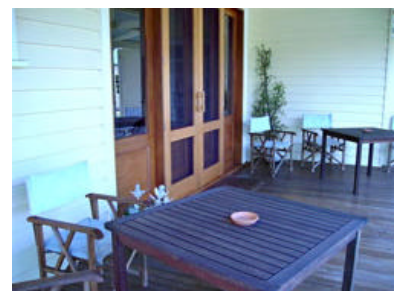
- We require valid credit card details to confirm the booking.
- Some minimum nights for peak and festival weekend.
- Cancellations will only be considered if 7 days notice is given and the vacancy filled (booking fee may be charged).



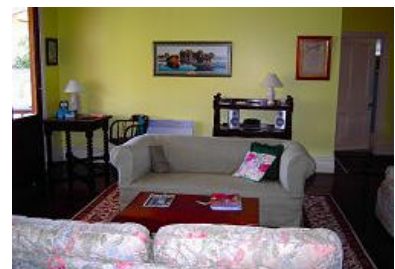
Welcome (click images to enlarge)



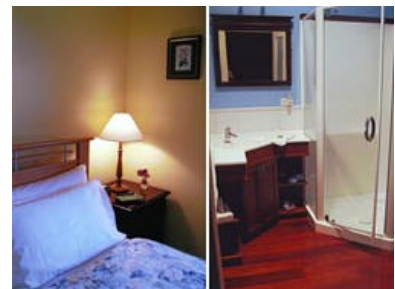
self contained quality guest accommodation



private verandah overlooking the gardens



guest living area



'Old Squattlesea Mere Homestead' bedroom & bathrom



cottage gardens and picnic area



Copyright ©2008 Old Squattlesea Mere. | Design WordsWorth communicating | All rights reserved